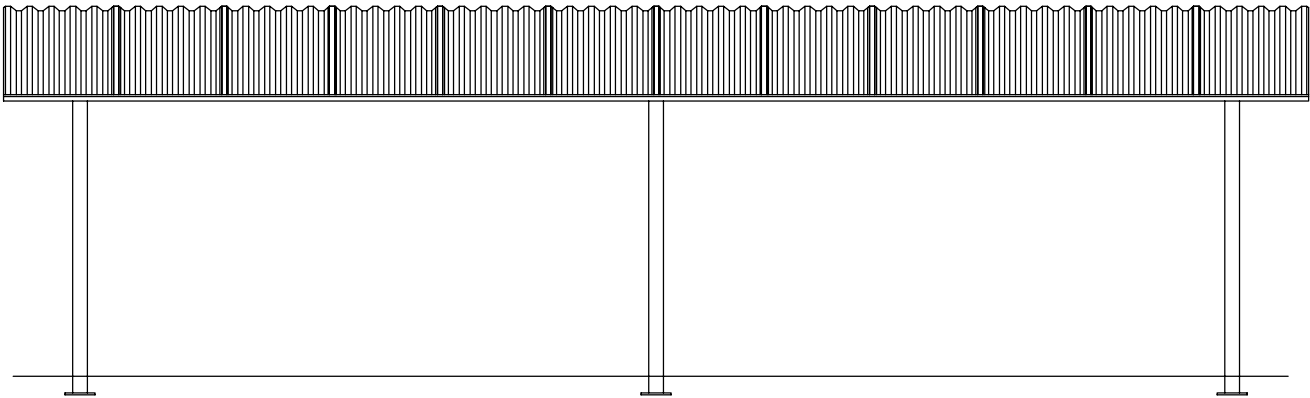
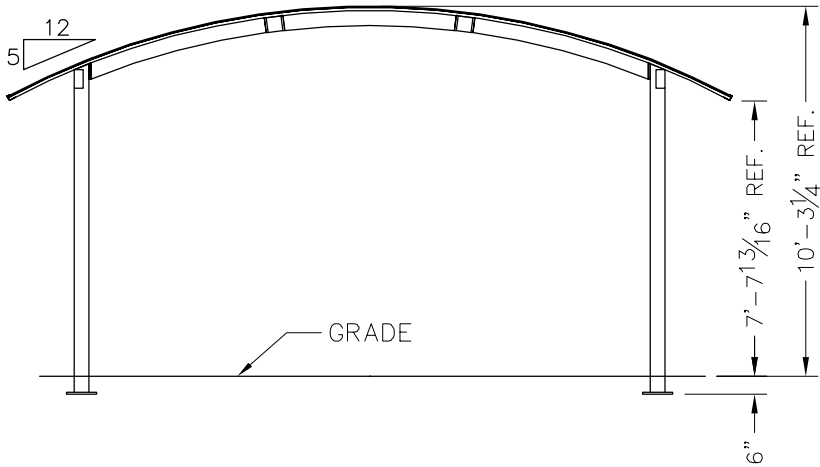
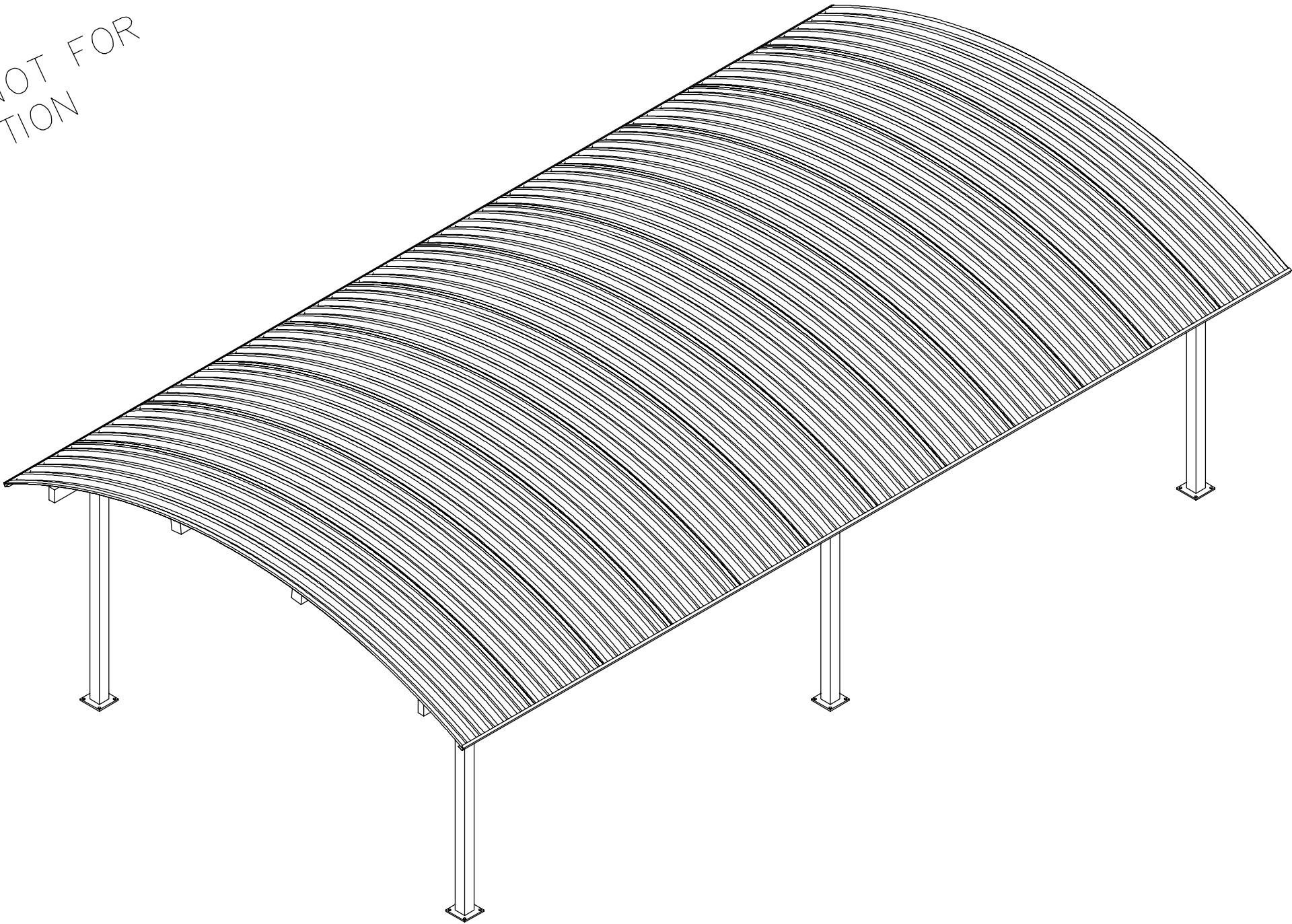


PRELIMINARY: NOT FOR
CONSTRUCTION



ICON
Shelter Systems Inc
DISTINCTIVE STEEL SHELTERS
WWW.ICONSHELTERS.COM
COPYRIGHT 2004, ICON SHELTER
SYSTEMS, INC.
1455 LINCOLN AVE.
HOLLAND MI, 49423
616.396.0919
800.748.0985
616.396.0944 FX

Elevation

DRAWN BY:

ACP

DATE:

9/23/2015

JOB NO.:

STANDARD

REVISION:

BUILDING TYPE:

BV20X36G-P5

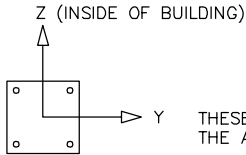
PROJECT NAME:

SHEET

1.0

Engineering\AcadStandard\Blocks\Titles\CONPRET
QF-73-01-42

DWG: \\iss-server02\Company\Engineering\Standards\Shelters\BV\20X36\G-P5-30-130-100\Drawings\Preliminary\BV20x36G-P5-30-130-100~38

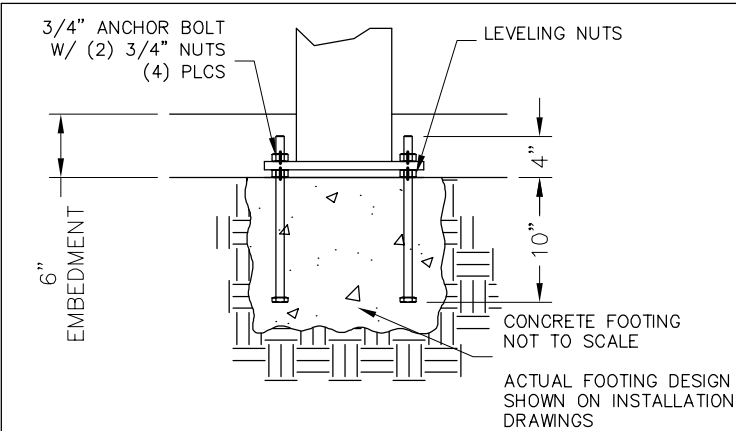
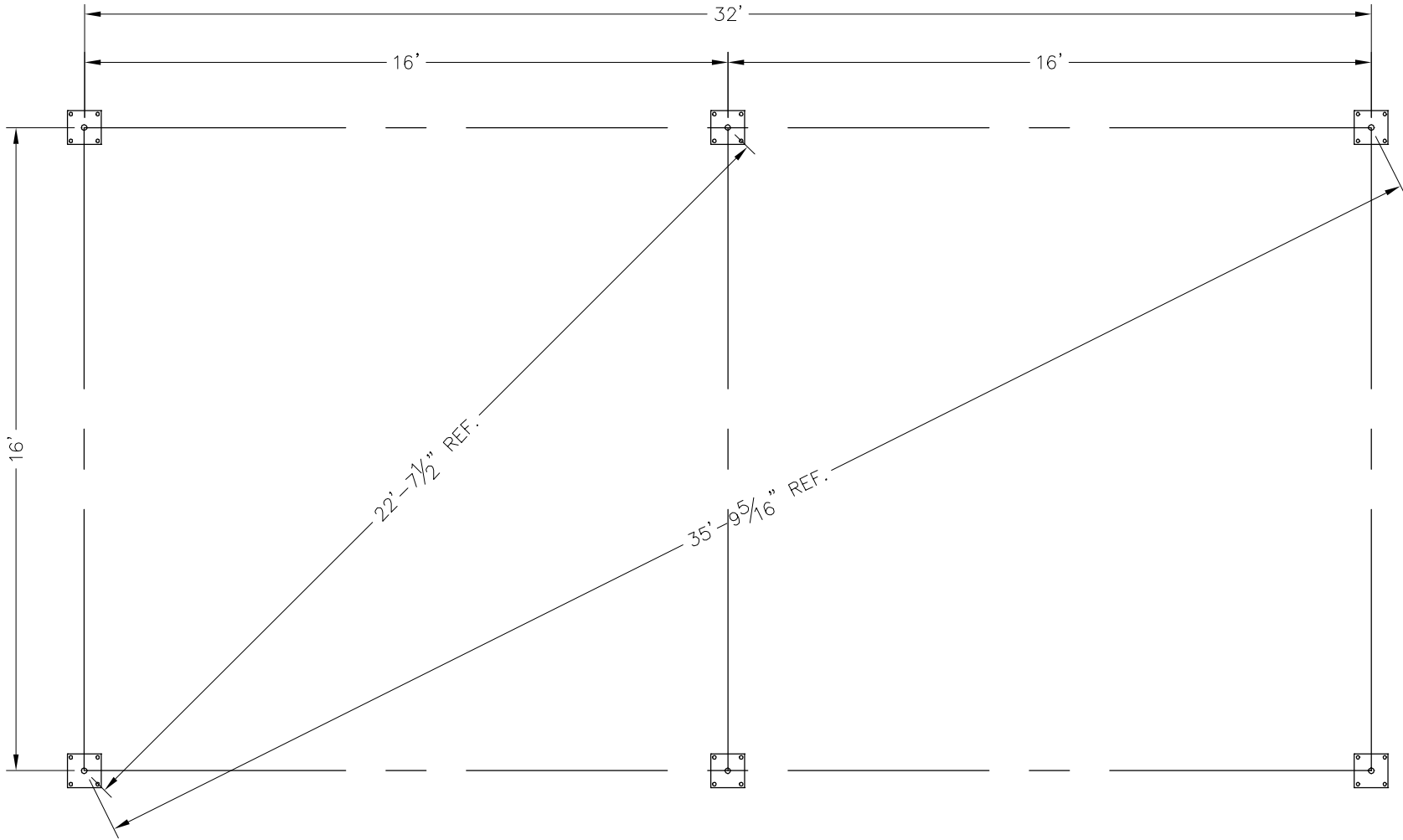


THESE FOUNDATION LOADS ARE FOR ESTIMATING PURPOSE ONLY.
THE ACTUAL LOADS WILL BE DETERMINED IN THE FINAL ENGINEERING

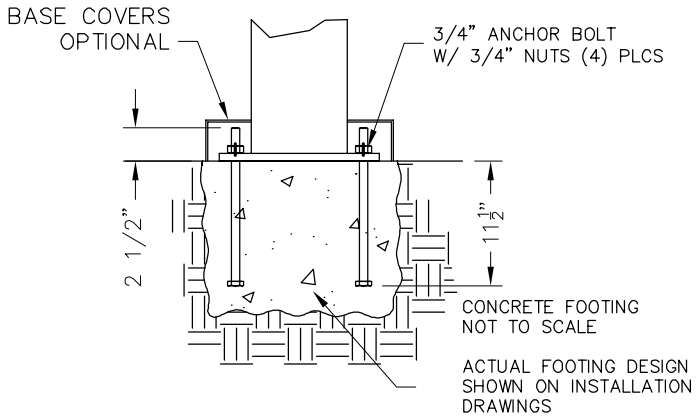
LOADS TO FOUNDATION (KIPS, IN-KIPS)	FOUNDATION LOADS					CL1
	AXIAL (Fx)	SHEAR (Fy)	SHEAR (Fz)	MOMENT (My)	MOMENT (Mz)	
DL	1.50	0.00	0.09	-0.80	0.00	
SL	6.78	0.00	0.42	-3.70	0.02	
W-UPLIFT	-5.75	0.41	-0.29	2.64	2.54	
W-FY	-5.75	-0.42	-0.30	2.64	-2.57	
W-FZ	2.71	0.00	1.35	-11.97	0.01	
E-FY	0.00	-1.27	0.00	0.00	-7.78	
E-Z	-0.11	0.00	-1.02	9.02	0.00	

- NOTES:
- TABLE SHOWS UNFACTORED SERVICE LOADS
 - A FOUNDATION DESIGN HAS NOT BEEN PERFORMED BY ICON SHELTER SYSTEMS INC.
 - A LICENSED ENGINEER FAMILIAR WITH SOIL CONDITIONS AT CONSTRUCTION SITE MUST PERFORM A FOUNDATION DESIGN.
 - THE STRUCTURE HAS BEEN ENGINEERED AS AN OPEN STRUCTURE.
 - CONSULT ICON SHELTER SYSTEMS INC. IF THE STRUCTURE IS TO BE ENCLOSED.
 - COORDINATES ARE LOCAL TO THE COLUMN

DEFINITIONS:
DL = SERVICE LEVEL DEAD LOAD REACTION WITH THE GREATEST AXIAL LOAD
SL = SERVICE LEVEL SNOW LOAD REACTION WITH THE GREATEST AXIAL LOAD
W-UL = SERVICE LEVEL WIND LOAD REACTION WITH THE GREATEST UPLIFT LOAD
W-Y = SERVICE LEVEL WIND LOAD REACTION WITH THE GREATEST MAGNITUDE OF SHEAR IN THE LOCAL Y DIRECTION
W-Z = SERVICE LEVEL WIND LOAD REACTION WITH THE GREATEST SHEAR VALUE ACTING IN THE SAME DIRECTION AS THE DL SHEAR LOAD
E-Y = SERVICE LEVEL SEISMIC LOAD REACTION WITH THE GREATEST MAGNITUDE OF SHEAR IN THE LOCAL Y DIRECTION
E-Z = SERVICE LEVEL SEISMIC LOAD REACTION WITH THE GREATEST MAGNITUDE OF SHEAR IN THE LOCAL Z DIRECTION



PRELIMINARY DRAWINGS SHOWN AS 6" BURIED
STANDARD BASE CONNECTION
COLUMN TYPE: A (6" BURIED)



OPTIONAL BASE CONNECTION
COLUMN TYPE: B (SURFACE MOUNT W/ COVERS)

PRELIMINARY: NOT FOR
CONSTRUCTION

ICON
Shelter Systems Inc
DISTINCTIVE STEEL SHELTERS
WWW.ICONSHELTERS.COM
COPYRIGHT 2004, ICON SHELTER
SYSTEMS, INC.

1455 LINCOLN AVE.
HOLLAND MI, 49423

616.396.0919
800.748.0985
616.396.0944 FX

Anchor Bolt Layout

DRAWN BY:

ACP

DATE:

9/23/2015

JOB NO.:

STANDARD

REVISION:

BUILDING TYPE:

BV20X36G-P5

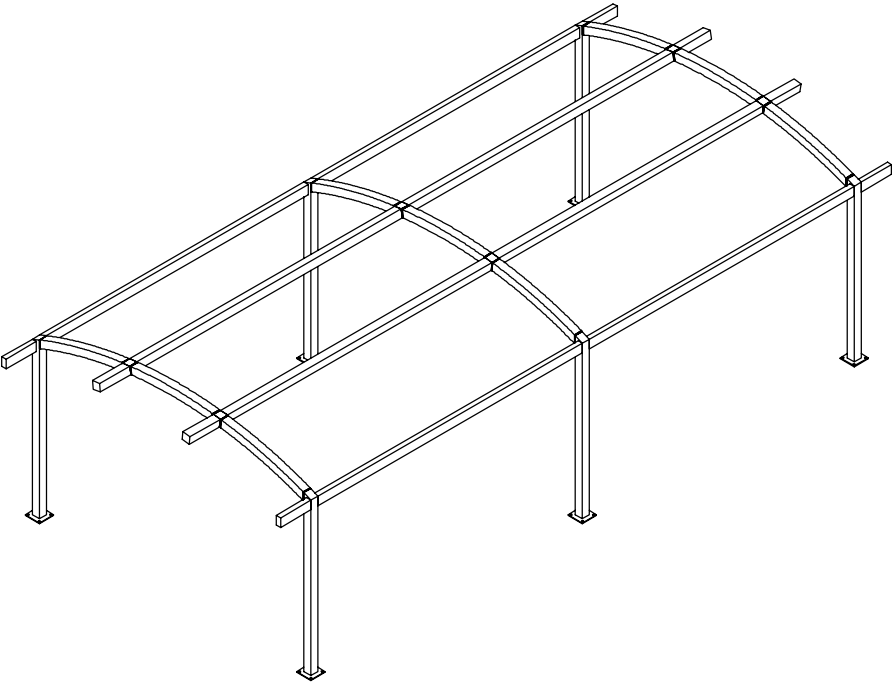
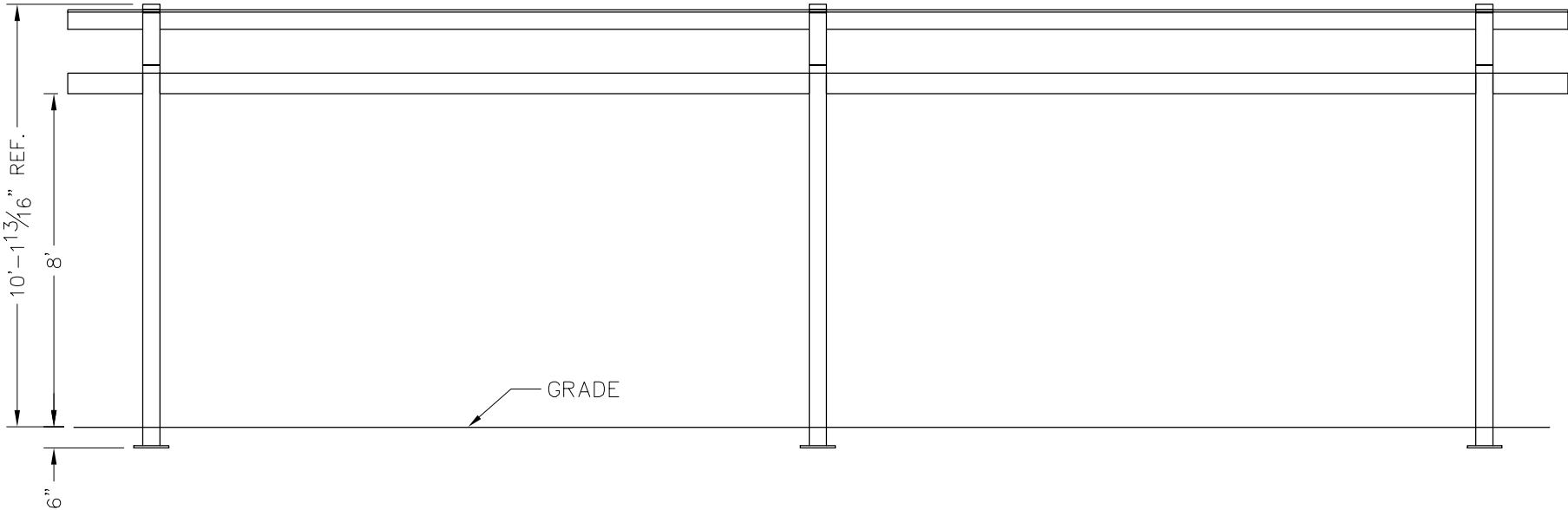
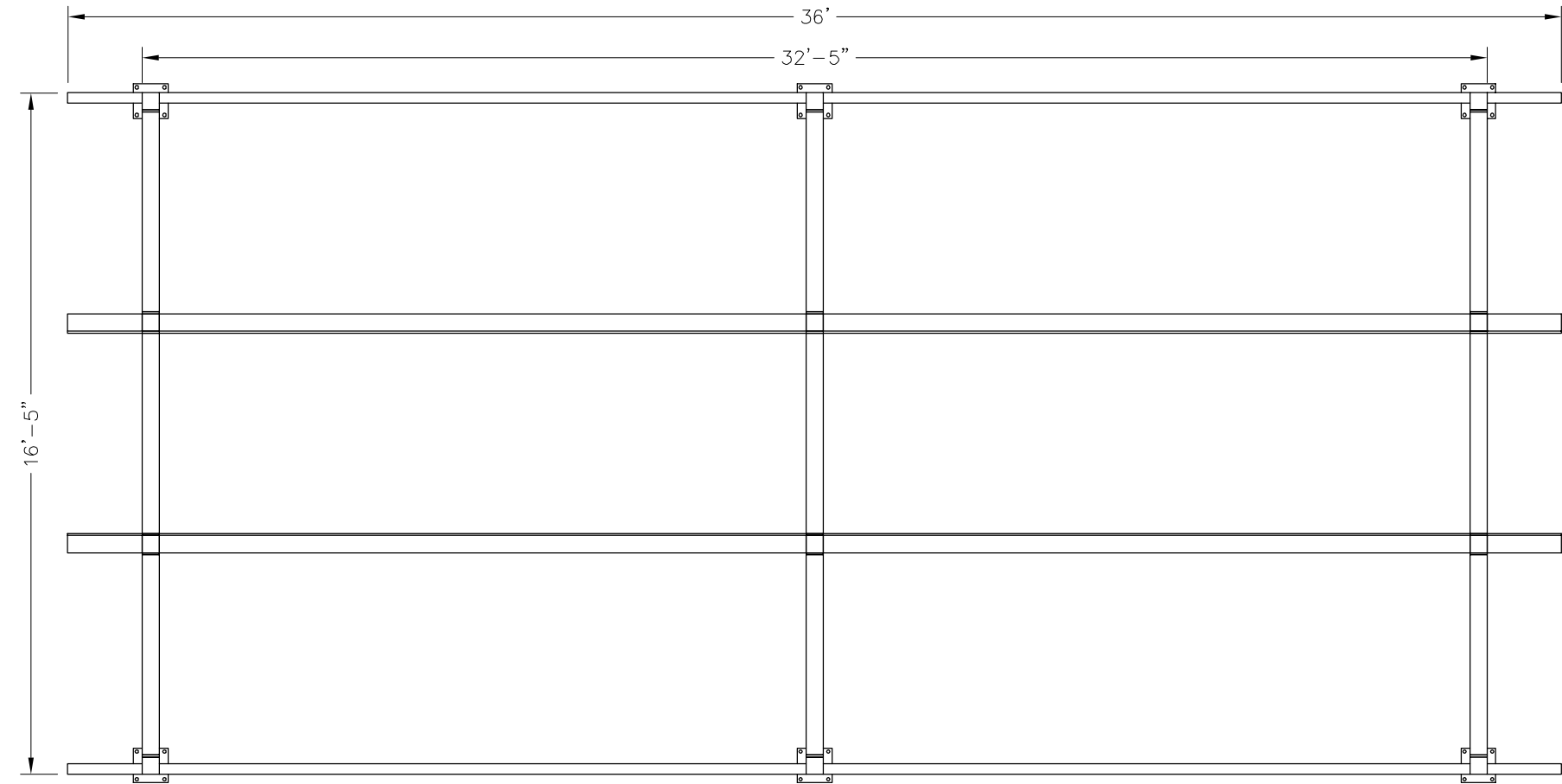
PROJECT NAME:

SHEET

2.0

Engineering\AcadStandard\Blocks\Titles\CONPRET
QT-73-01-42

DWG: \\iss-server02\Company\Engineering\Standards\Shelters\BV\20X36\G-P5-30-130-100\Drawings\Preliminary\BV20x36G-P5-30-130-100~38



ALL STRUCTURAL COMPONENTS WILL BE:
TUBE: ASTM A500 GRADE B
PLATE: ASTM A36
BOLTS: ASTM A325
NUTS: ASTM A563
WELDING: GMAW

NOTE:
COLUMN SIZE: HSS 6x6x3/16

PRELIMINARY: NOT FOR
CONSTRUCTION

ICON

Shelter Systems Inc

DISTINCTIVE STEEL SHELTERS

WWW.ICONSHelters.COM

COPYRIGHT 2004, ICON SHELTER SYSTEMS, INC.

1455 LINCOLN AVE.

HOLLAND MI, 49423

616.396.0919

800.748.0985

616.396.0944 FX

Frame

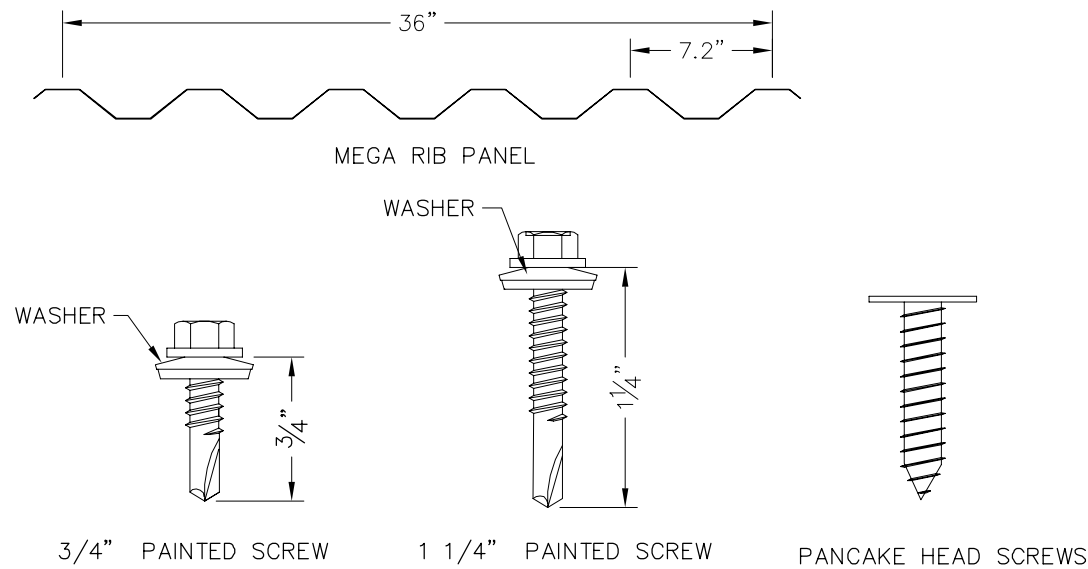
DRAWN BY:	ACP
DATE:	9/23/2015
JOB NO.:	STANDARD
REVISION:	
BUILDING TYPE:	BV20X36G-P5
PROJECT NAME:	

SHEET

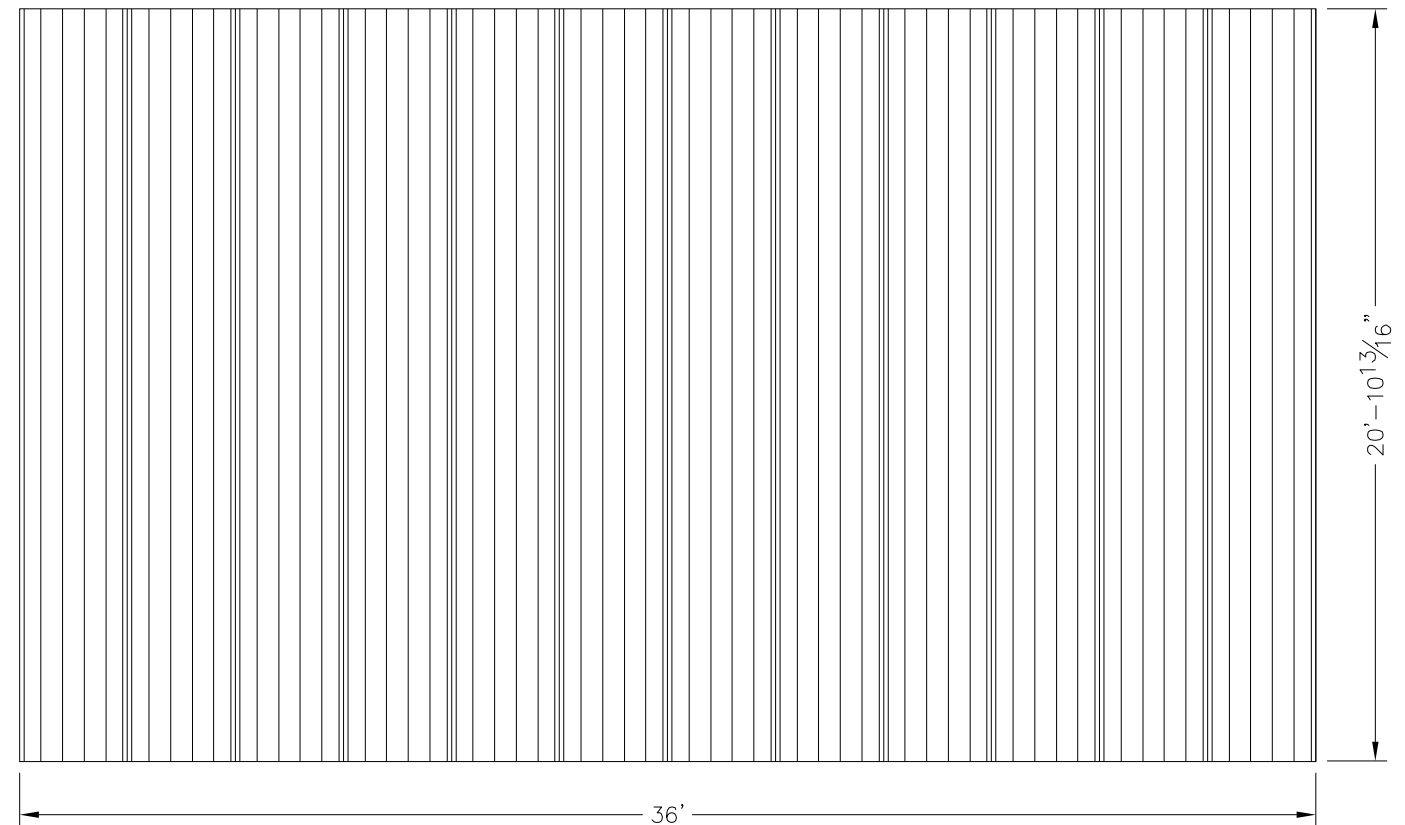
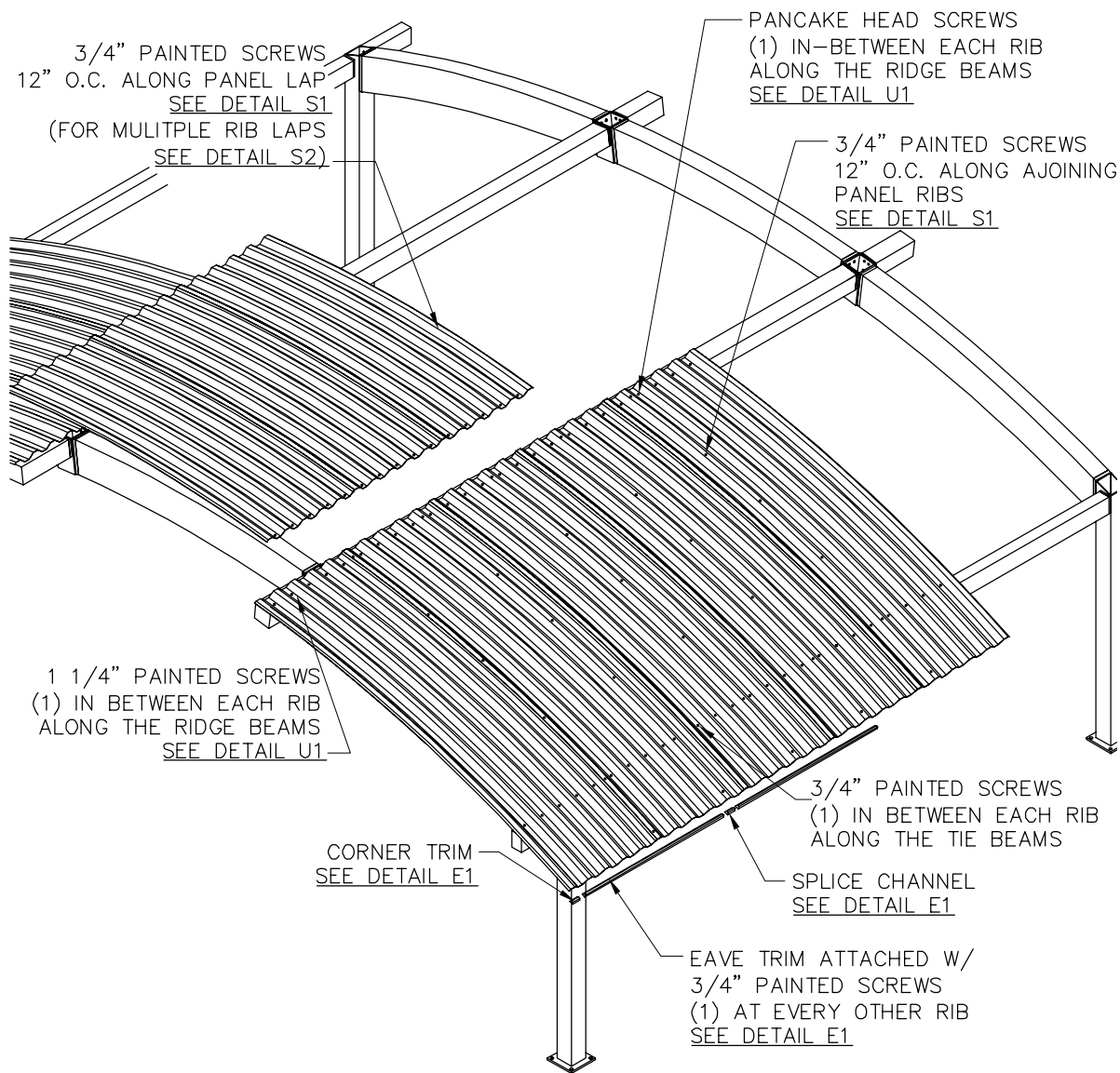
3.0

Engineering\AcadStandard\Blocks\Titles\COMPLETE QF-73-01-42

DWG: \\iss-server02\Company\Engineering\Standards\Shelters\BV\20X36\G-P5-30-130-100\Drawings\Preliminary\BV20x36G-P5-30-130-100~38



PRELIMINARY: NOT FOR CONSTRUCTION



NOTE: STANDARD DETAILS SHOWN
ACTUAL BUILDING MAY VARY

ICON
Shelter Systems Inc
DISTINCTIVE STEEL SHELTERS
WWW.ICONSHelters.COM
COPYRIGHT 2004, ICON SHELTER
SYSTEMS, INC.
1455 LINCOLN AVE.
HOLLAND MI, 49423
616.396.0919
800.748.0985
616.396.0944 FX

Roof Layout

DRAWN BY:
ACP
DATE:
9/23/2015
JOB NO.:
STANDARD
REVISION:
BUILDING TYPE:
BV20X36G-P5
PROJECT NAME:

SHEET
4.0
Engineering\AcadStandard\Blocks\Titles\CONPRETB
QT-73-01-42

DWG: \\iss-server02\Company\Engineering\Standards\Shelters\BV\20X36\G-P5-30-130-100\Drawings\Preliminary\BV20x36G-P5-30-130-100~38