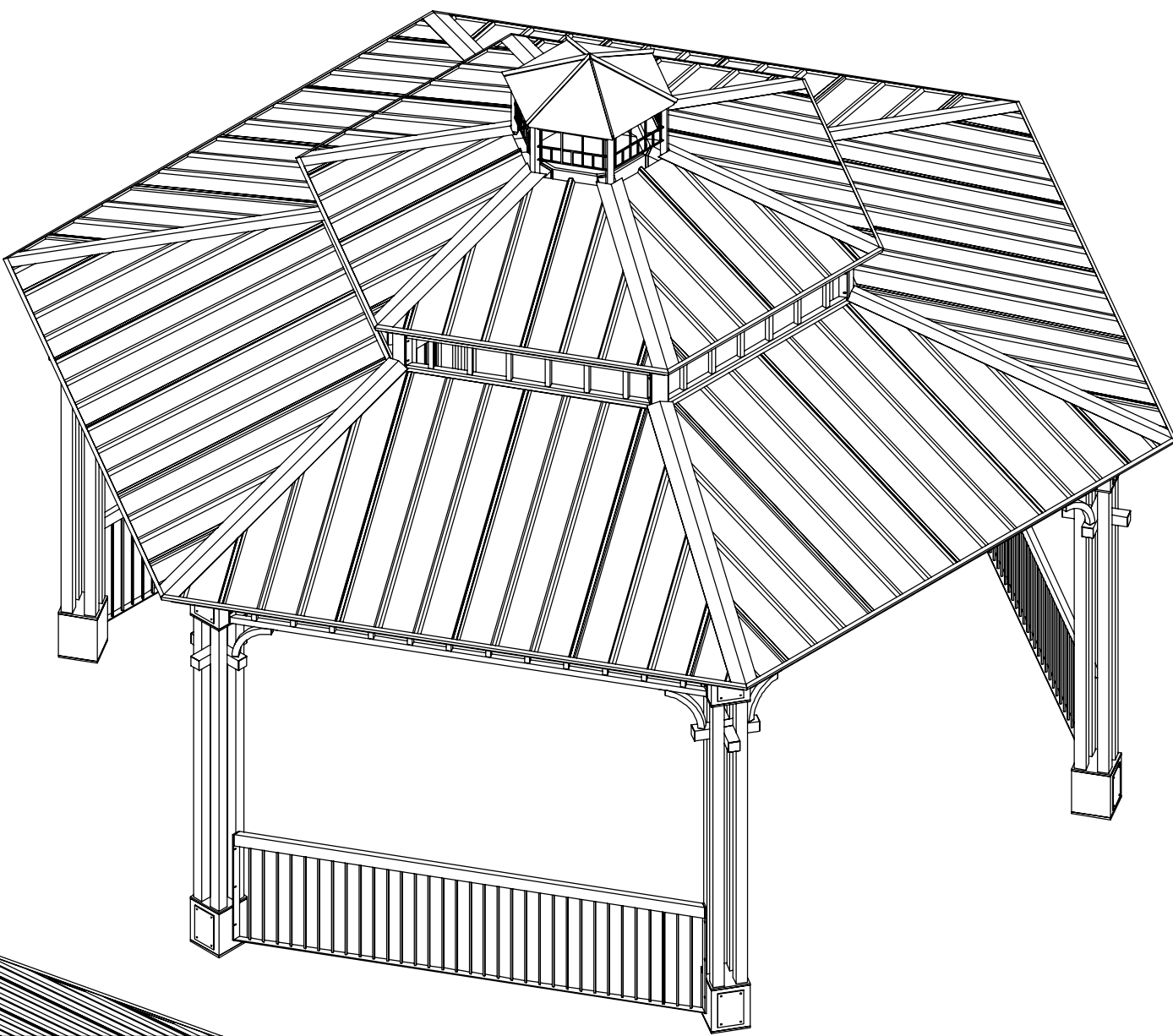
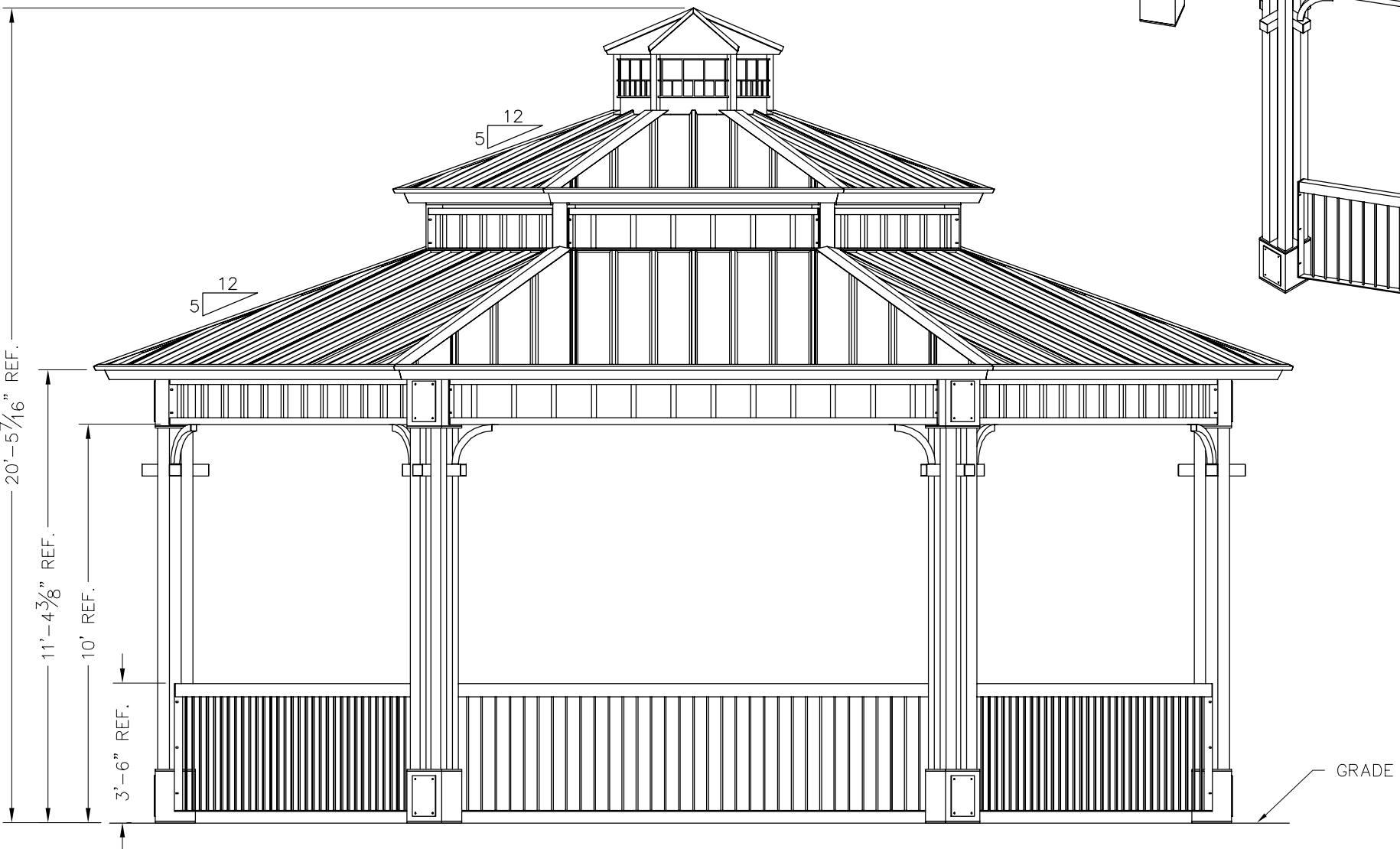


PRELIMINARY: NOT FOR  
CONSTRUCTION



ICON  
Shelter Systems Inc  
DISTINCTIVE STEEL SHELTERS  
WWW.ICONSHELTERS.COM  
COPYRIGHT 2004, ICON SHELTER  
SYSTEMS, INC.  
1455 LINCOLN AVE.  
HOLLAND MI, 49423  
616.396.0919  
800.748.0985  
616.396.0944 FX

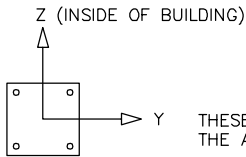
Elevation

DRAWN BY:
ACP
DATE:
2/12/2016
JOB NO.:
STANDARD
REVISION:
A
BUILDING TYPE:
CX30-10TM2C-P5
PROJECT NAME:

SHEET  
1.0

Engineering\AcadStandard\Blocks\Titles\CONPRET  
QT-73-01-42

DWG: \\Icon01\Company\Engineering\Standards\CX\30\TM2C-P5-20-90-30\Drawings\Preliminary\CX30-10TM2C-P5-20-90-30~41174.DWG

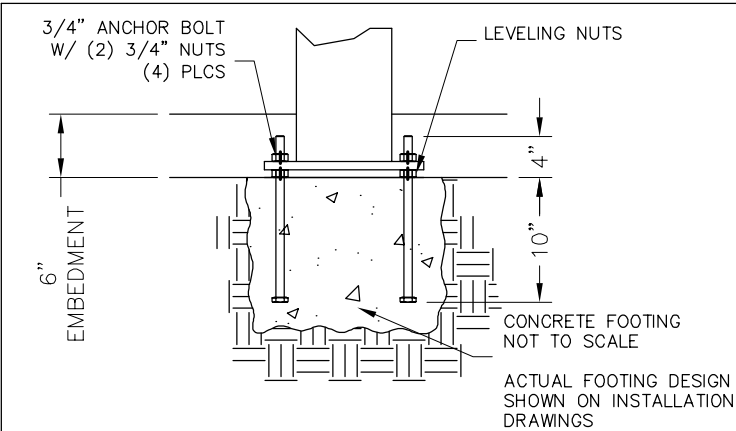
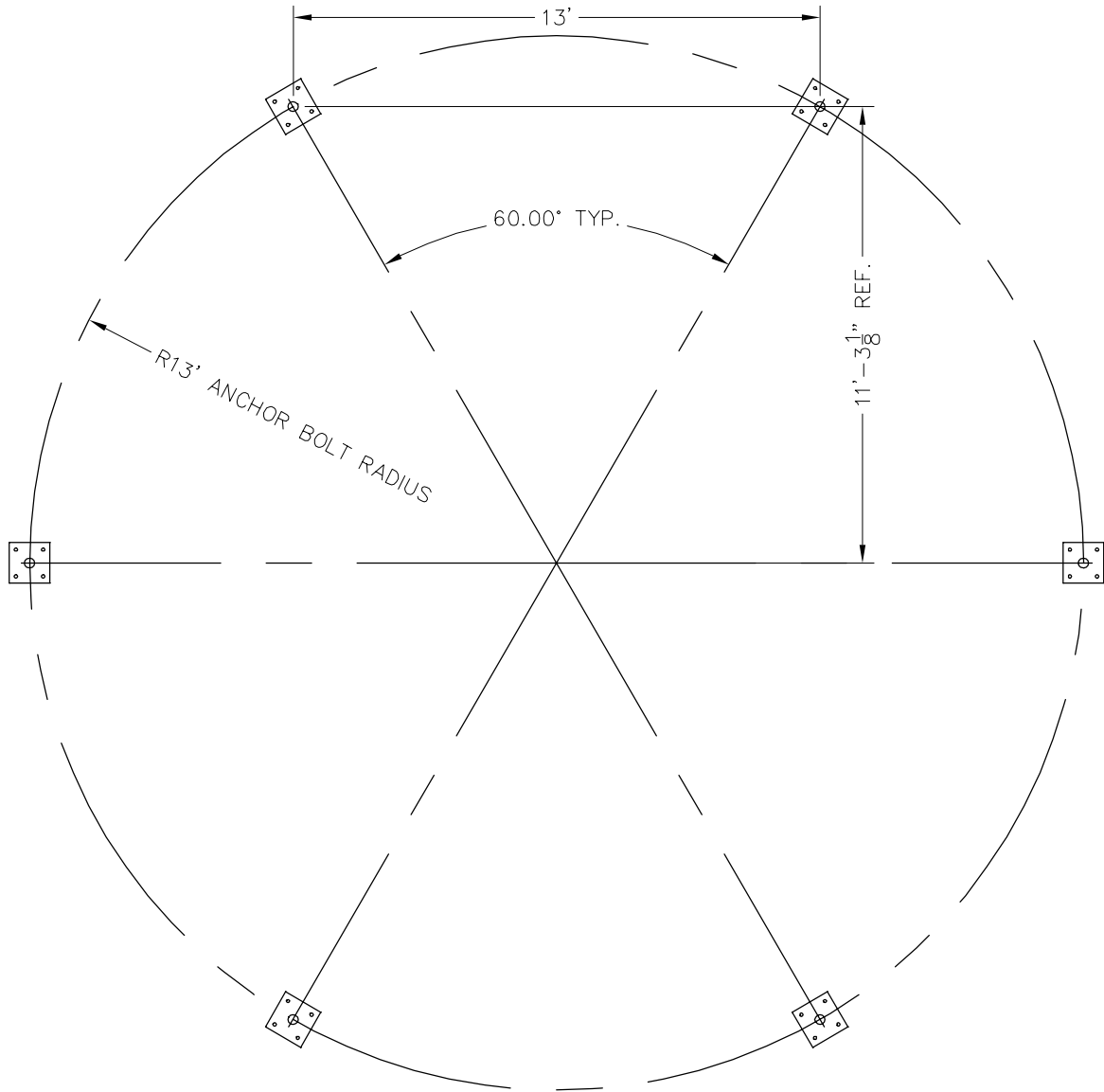


THESE FOUNDATION LOADS ARE FOR ESTIMATING PURPOSE ONLY.  
THE ACTUAL LOADS WILL BE DETERMINED IN THE FINAL ENGINEERING

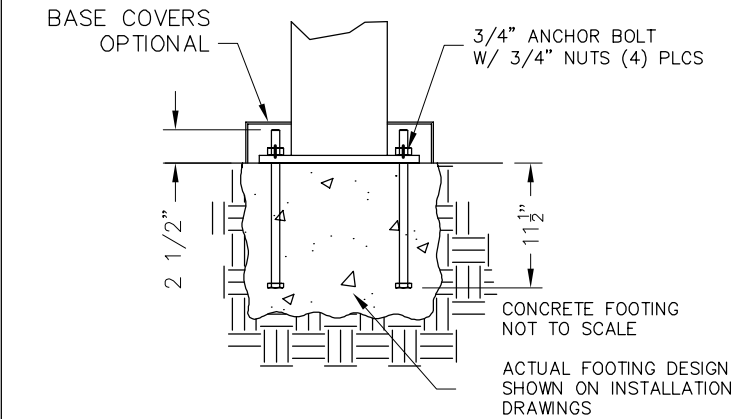
LOADS TO FOUNDATION (KIPS, IN-KIPS)	FOUNDATION LOADS					CL1
	AXIAL (Fx)	SHEAR (Fy)	SHEAR (Fz)	MOMENT (My)	MOMENT (Mz)	
DL	1.19	0.00	0.06	-3.11	0.00	
SL	2.48	0.00	0.16	-7.52	0.00	
W-UPLIFT	-1.27	0.21	-0.19	13.02	17.64	
W-FY	-1.19	-0.28	-0.07	3.36	-23.10	
W-FZ	-1.26	-0.15	-0.29	22.58	-11.76	
E-FY	0.00	-0.14	0.00	0.00	-11.13	
E-Z	-0.11	0.00	-0.13	10.61	0.00	

- NOTES:
- TABLE SHOWS UNFACTORED SERVICE LOADS
  - A FOUNDATION DESIGN HAS NOT BEEN PERFORMED BY ICON SHELTER SYSTEMS INC.
  - A LICENSED ENGINEER FAMILIAR WITH SOIL CONDITIONS AT CONSTRUCTION SITE MUST PERFORM A FOUNDATION DESIGN.
  - THE STRUCTURE HAS BEEN ENGINEERED AS AN OPEN STRUCTURE.
  - CONSULT ICON SHELTER SYSTEMS INC. IF THE STRUCTURE IS TO BE ENCLOSED.
  - COORDINATES ARE LOCAL TO THE COLUMN

DEFINITIONS:  
DL = SERVICE LEVEL DEAD LOAD REACTION WITH THE GREATEST AXIAL LOAD  
SL = SERVICE LEVEL SNOW LOAD REACTION WITH THE GREATEST AXIAL LOAD  
W-UL = SERVICE LEVEL WIND LOAD REACTION WITH THE GREATEST UPLIFT LOAD  
W-Y = SERVICE LEVEL WIND LOAD REACTION WITH THE GREATEST MAGNITUDE OF SHEAR IN THE LOCAL Y DIRECTION  
W-Z = SERVICE LEVEL WIND LOAD REACTION WITH THE GREATEST SHEAR VALUE ACTING IN THE SAME DIRECTION AS THE DL SHEAR LOAD  
E-Y = SERVICE LEVEL SEISMIC LOAD REACTION WITH THE GREATEST MAGNITUDE OF SHEAR IN THE LOCAL Y DIRECTION  
E-Z = SERVICE LEVEL SEISMIC LOAD REACTION WITH THE GREATEST MAGNITUDE OF SHEAR IN THE LOCAL Z DIRECTION



PRELIMINARY DRAWINGS SHOWN AS 6" BURIED  
STANDARD BASE CONNECTION  
COLUMN TYPE: A (6" BURIED)



OPTIONAL BASE CONNECTION  
COLUMN TYPE: B (SURFACE MOUNT W/ COVERS)

PRELIMINARY: NOT FOR CONSTRUCTION

ICON

Shelter Systems Inc

DISTINCTIVE STEEL SHELTERS

WWW.ICONSHELTERS.COM

COPYRIGHT 2004, ICON SHELTER SYSTEMS, INC.

1455 LINCOLN AVE.  
HOLLAND MI, 49423

616.396.0919  
800.748.0985  
616.396.0944 FX

Anchor Bolt Layout

DRAWN BY:

ACP

DATE:

2/12/2016

JOB NO.:

STANDARD

REVISION:

A

BUILDING TYPE:

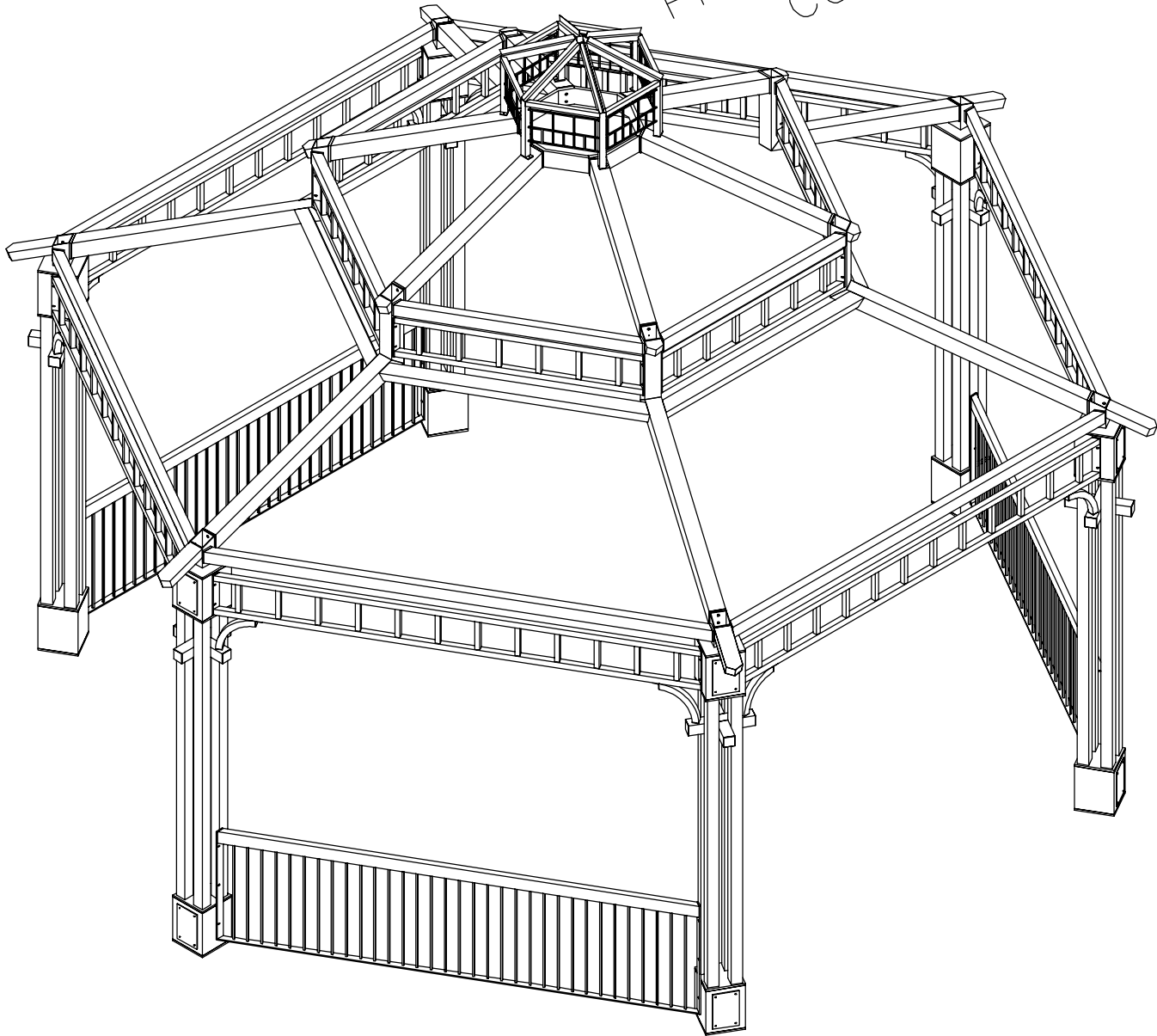
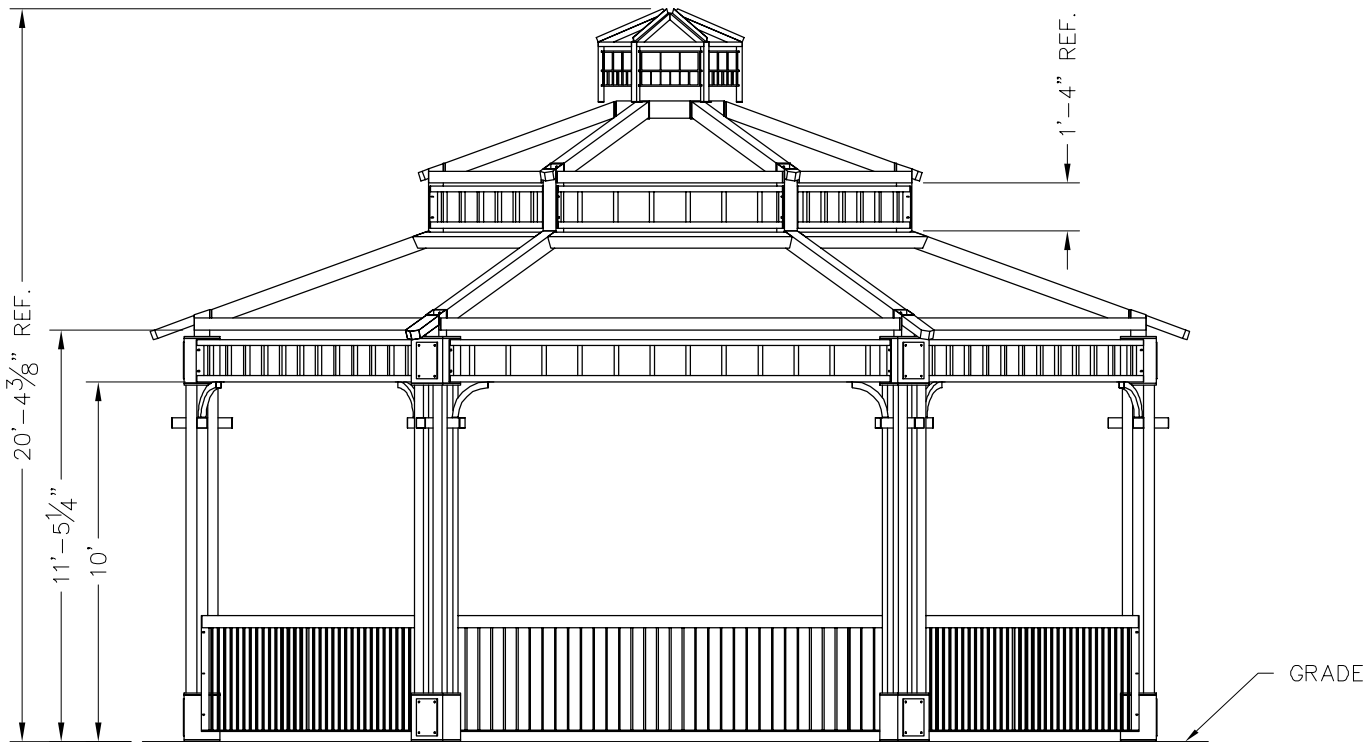
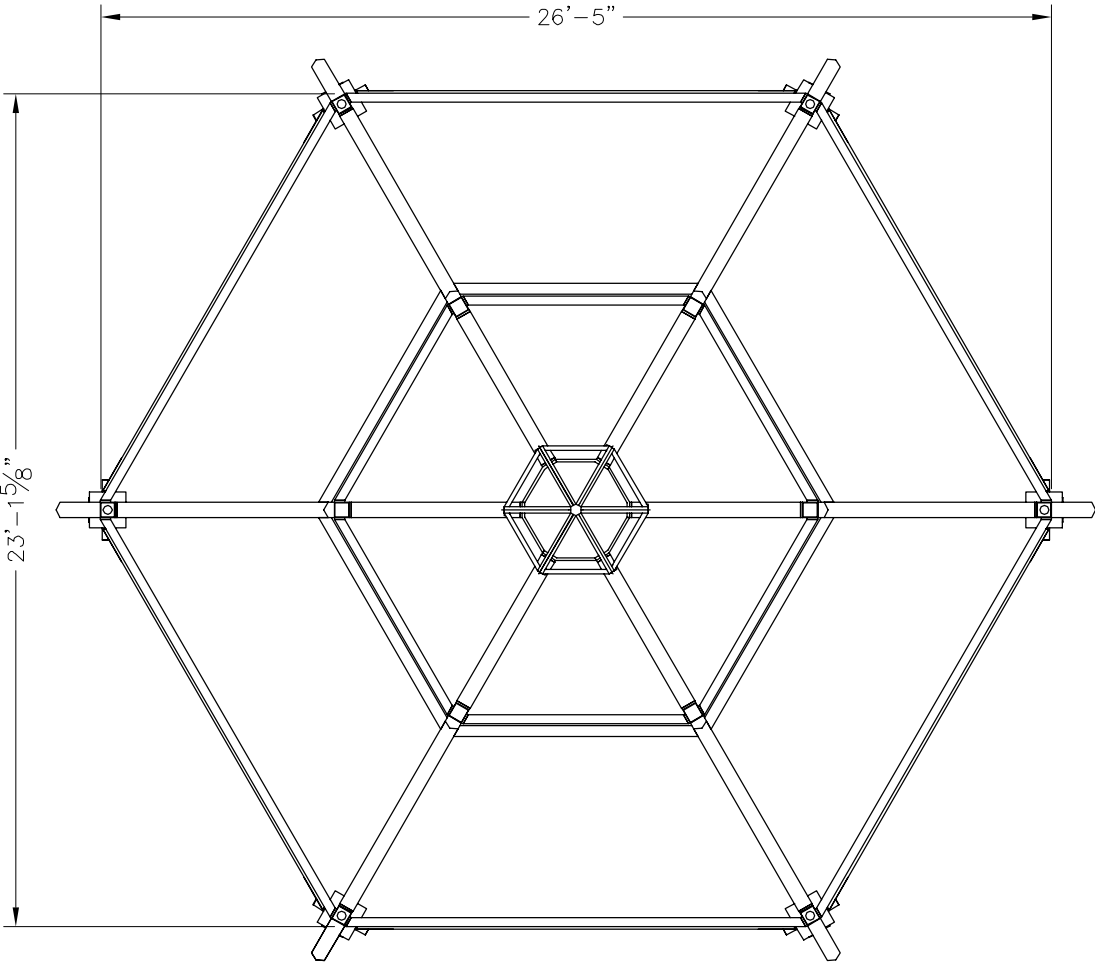
CX30-10TM2C-P5

PROJECT NAME:

SHEET

2.0

Engineering\AcadStandard\Blocks\Titles\CONPRET.qcf-73-01-42



ALL STRUCTURAL COMPONENTS WILL BE:  
TUBE: ASTM A500 GRADE B  
PLATE: ASTM A36  
BOLTS: ASTM A325  
NUTS: ASTM A563  
WELDING: GMAW

NOTE:  
COLUMN SIZE: HSS (4) 3.5X3.5X0.1875

PRELIMINARY: NOT FOR  
CONSTRUCTION

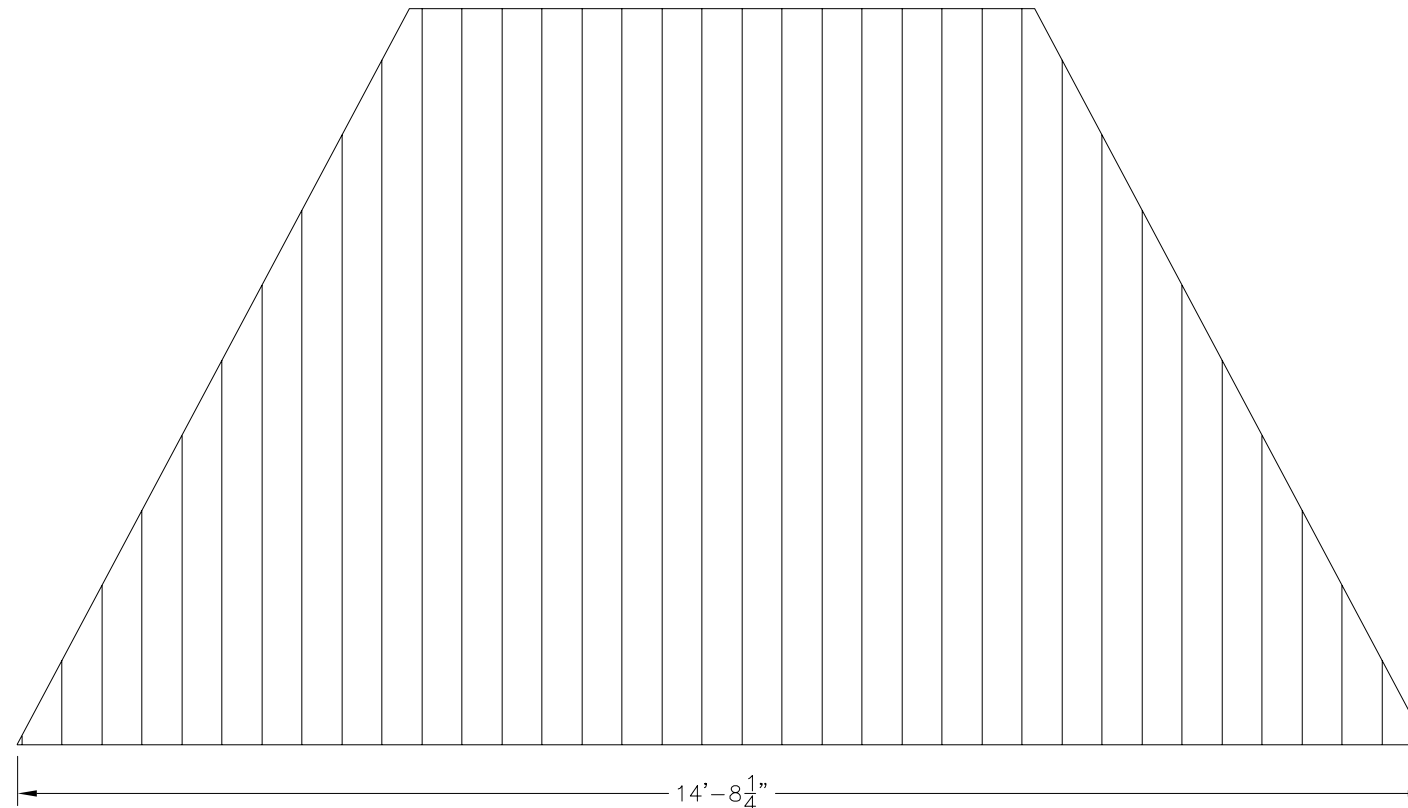
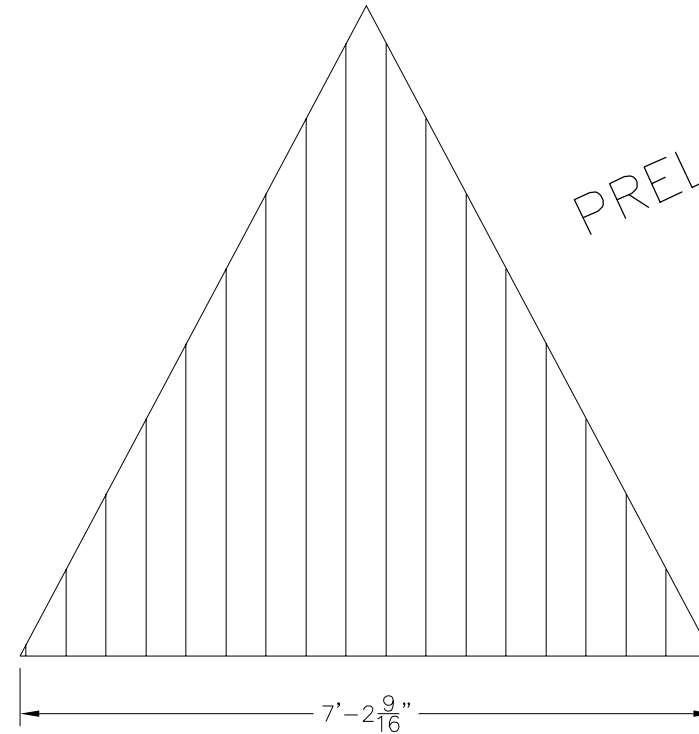
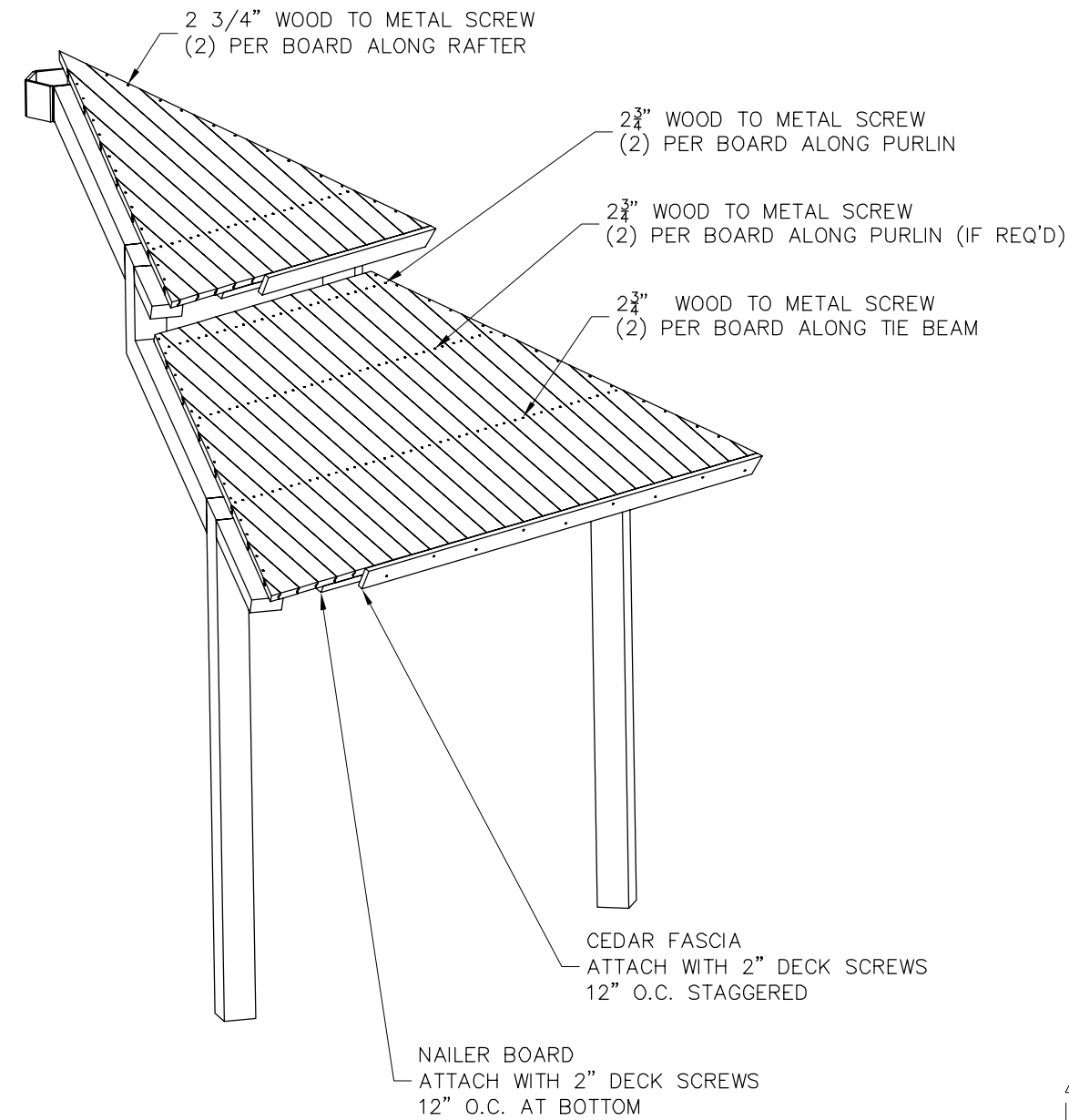
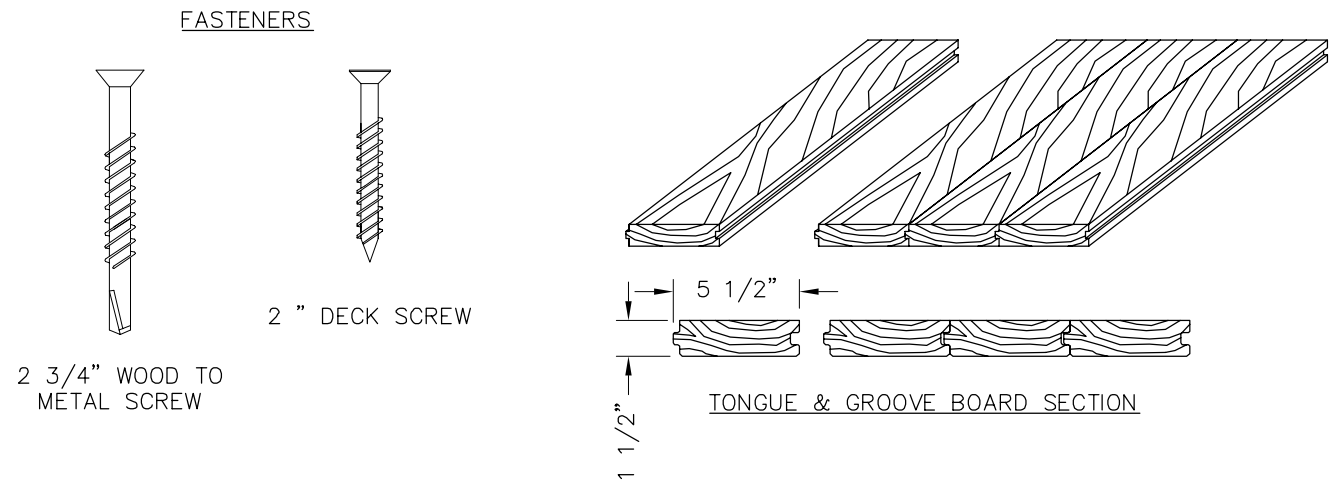
ICON  
Shelter Systems Inc  
DISTINCTIVE STEEL SHELTERS  
WWW.ICONSHelters.COM  
COPYRIGHT 2004, ICON SHELTER  
SYSTEMS, INC.  
1455 LINCOLN AVE.  
HOLLAND MI, 49423  
616.396.0919  
800.748.0985  
616.396.0944 FX

Frame

DRAWN BY:
ACP
DATE:
2/12/2016
JOB NO.:
STANDARD
REVISION:
A
BUILDING TYPE:
CX30-10TM2C-P5
PROJECT NAME:

SHEET  
3.0  
Engineering\AcadStandard\Blocks\Titles\CONPRET  
QT-73-01-42

DWG: \\Icon01\Company\Engineering\Standards\CX\30\TM2C-P5-20-90-30\Drawings\Preliminary\CX30-10TM2C-P5-20-90-30~41174.DWG



PRELIMINARY: NOT FOR  
CONSTRUCTION

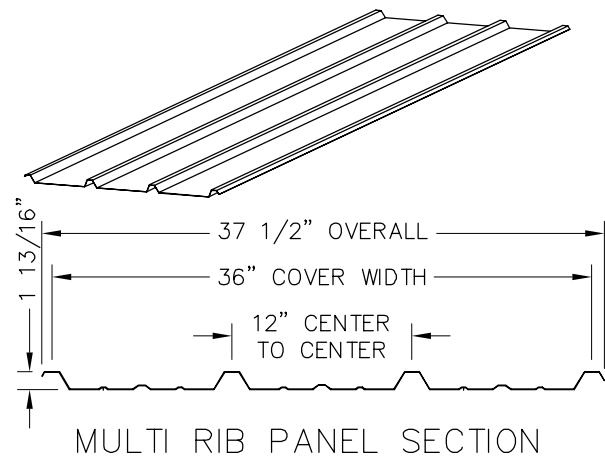
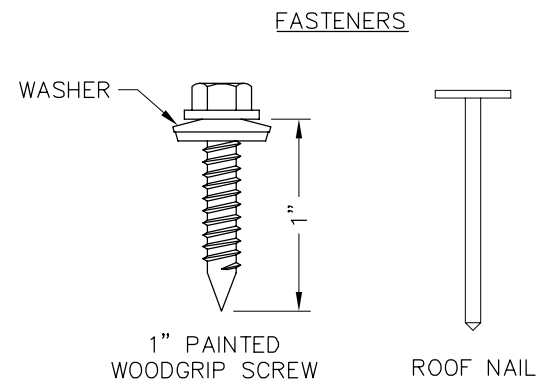
**ICON**  
Shelter Systems Inc  
DISTINCTIVE STEEL SHELTERS  
WWW.ICONSHelters.COM  
COPYRIGHT 2004, ICON SHELTER  
SYSTEMS, INC.  
1455 LINCOLN AVE.  
HOLLAND MI, 49423  
616.396.0919  
800.748.0985  
616.396.0944 FX

Roof Layout

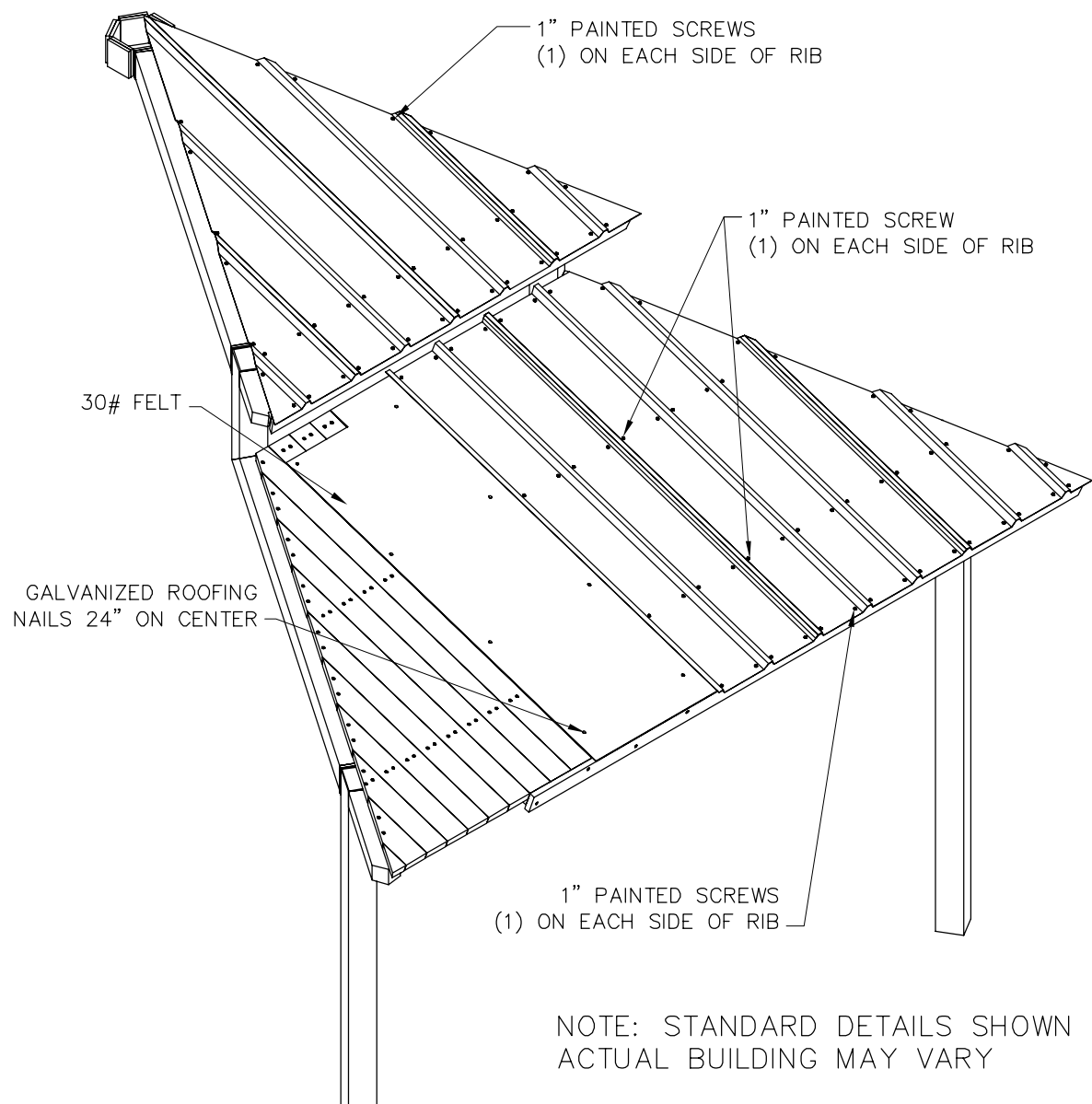
DRAWN BY:
ACP
DATE:
2/12/2016
JOB NO.:
STANDARD
REVISION:
A
BUILDING TYPE:
CX30-10TM2C-P5
PROJECT NAME:

SHEET  
4.0

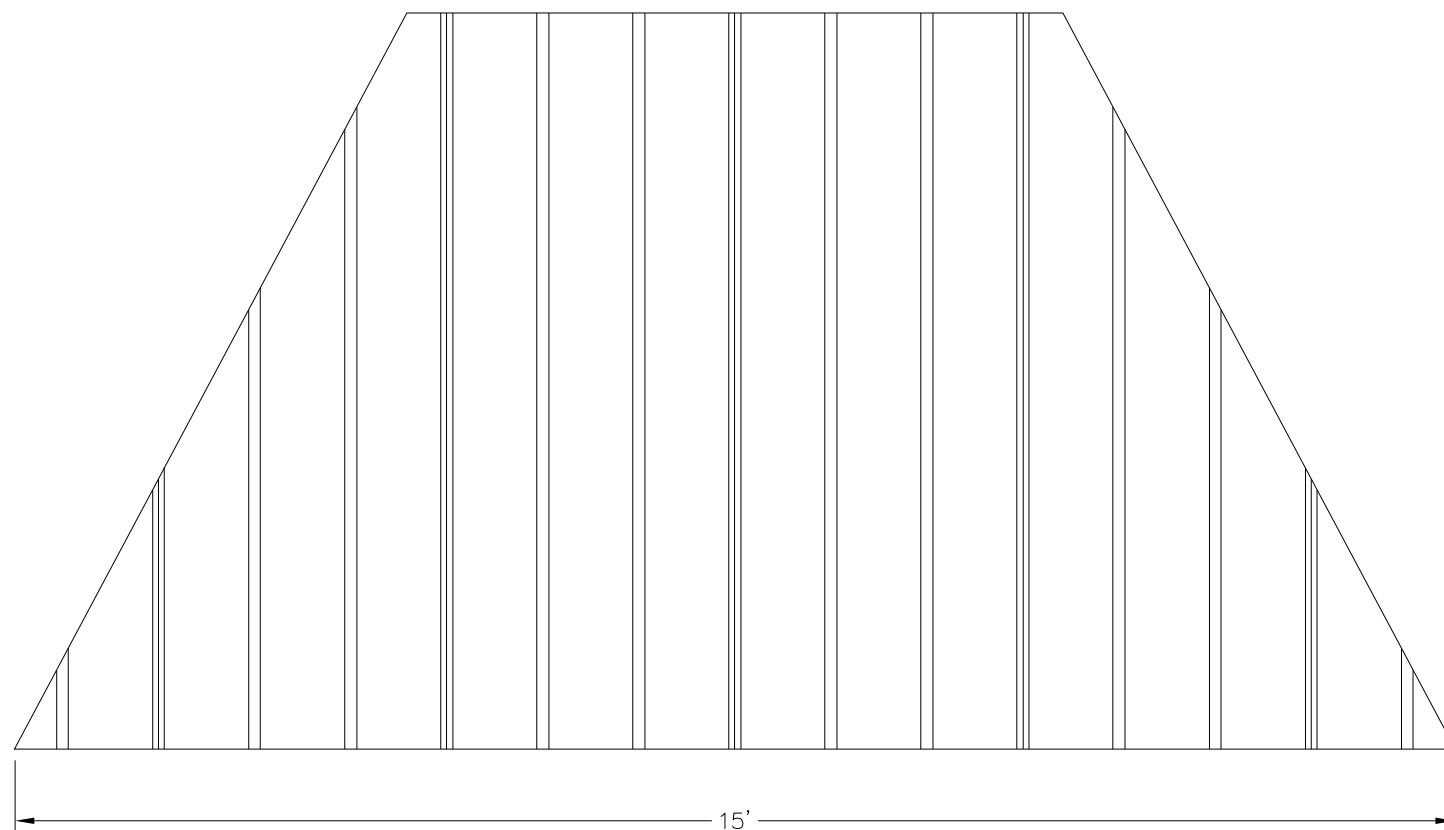
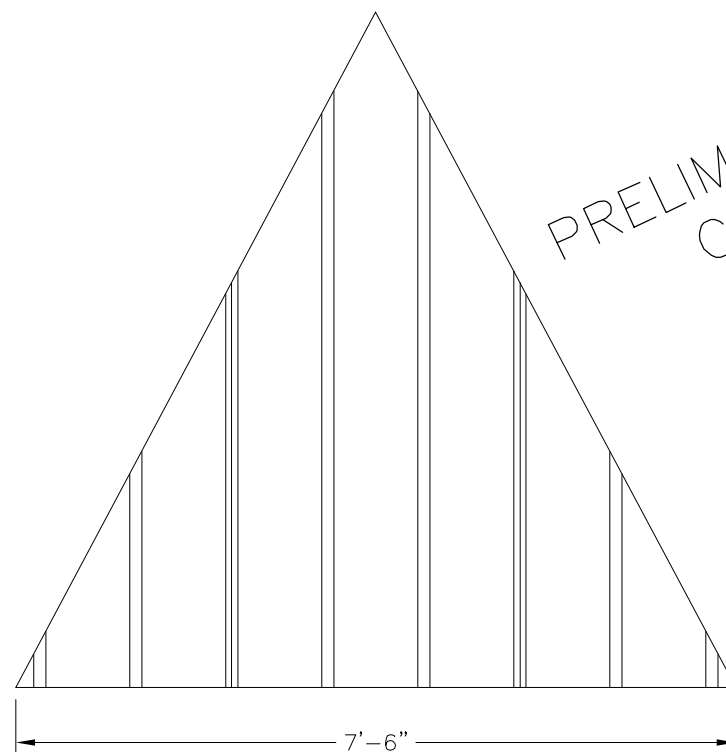
DWG: \\Icon01\Company\Engineering\Standards\CX\30\TM2C-P5-20-90-30\Drawings\Preliminary\CX30-10TM2C-P5-20-90-30-41174.DWG



PRELIMINARY: NOT FOR CONSTRUCTION



NOTE: STANDARD DETAILS SHOWN  
ACTUAL BUILDING MAY VARY



ICON  
Shelter Systems Inc  
DISTINCTIVE STEEL SHELTERS  
WWW.ICONSHELTERS.COM  
COPYRIGHT 2004, ICON SHELTER SYSTEMS, INC.  
1455 LINCOLN AVE.  
HOLLAND MI, 49423  
616.396.0919  
800.748.0985  
616.396.0944 FX

Roof Layout

DRAWN BY:

ACP

DATE:

2/12/2016

JOB NO.:

STANDARD

REVISION:

A

BUILDING TYPE:

CX30-10TM2C-P5

PROJECT NAME:

SHEET

4.1

Engineering\AcadStandard\Blocks\Titles\CONPRET  
QF-73-01-42

DWG: \\Icon01\Company\Engineering\Standards\CX\30\TM2C-P5-20-90-30\Drawings\Preliminary\CX30-10TM2C-P5-20-90-30~41174.DWG